

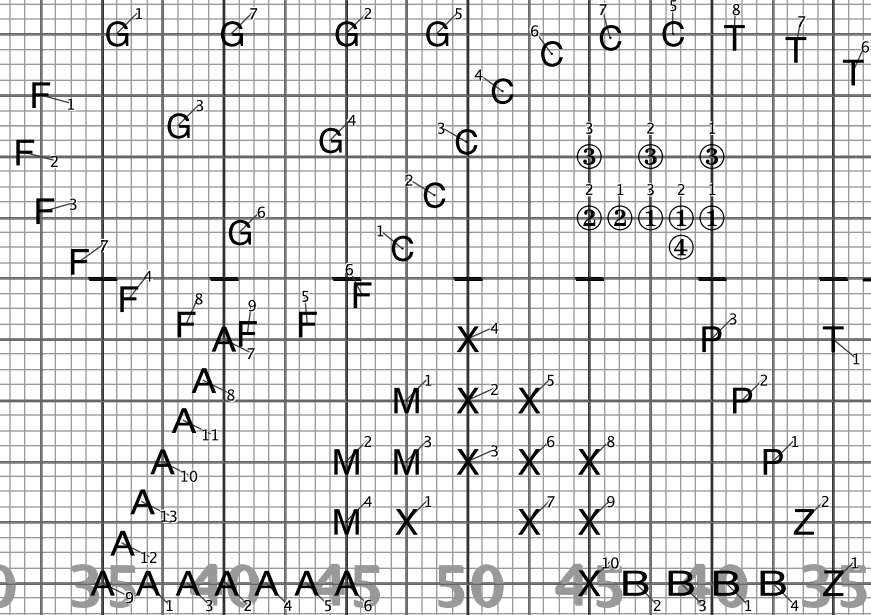
Fire 2014

Page 1

HOLD 16 (m 1-4)

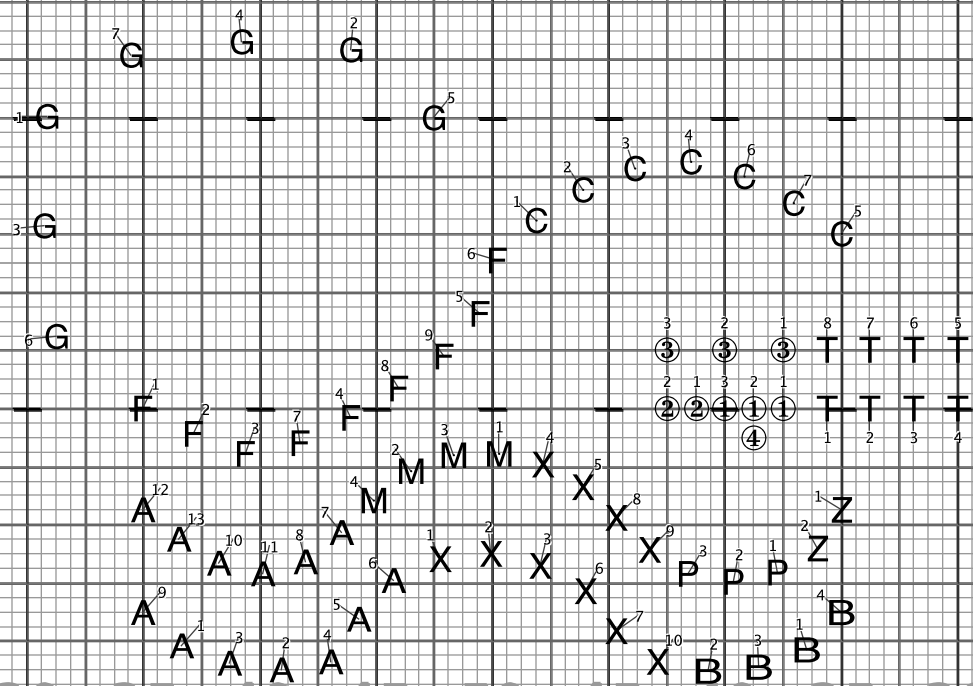
To Page 2:

FLOAT 16 (m 5-8)



Director Viewpoint

Fire 2014
Page 2
To Page 3:
FLOAT 24 (m 9-14)
HOLD 8 (m 15-16)
PnB 32 (m 17-24)



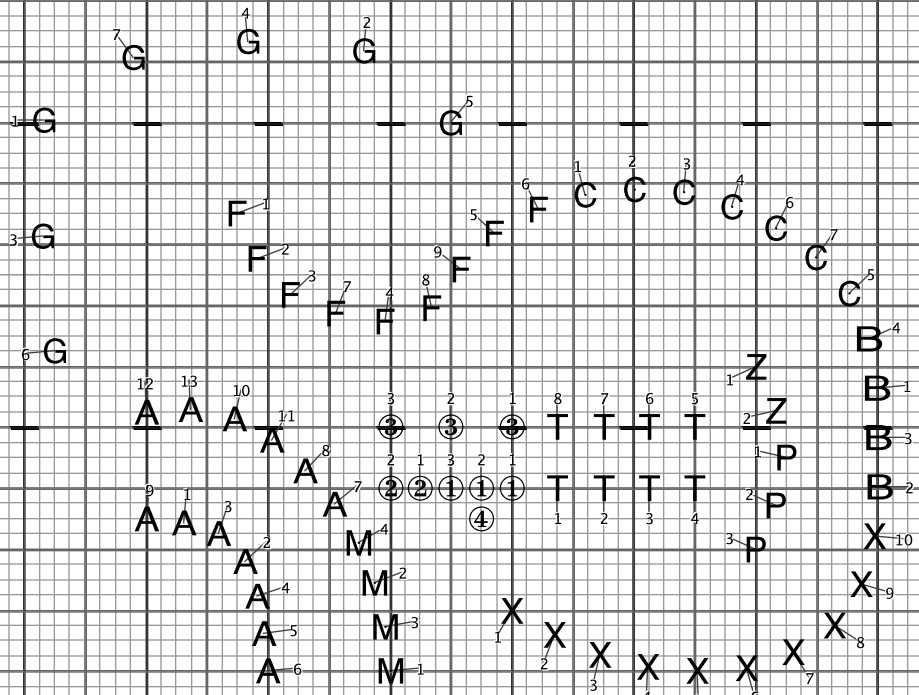
Director Viewpoint

Fire 2014

Page 3

To Page 4:

FLOAT 24 (m 25-30)
HOLD 8 (m 31-32)

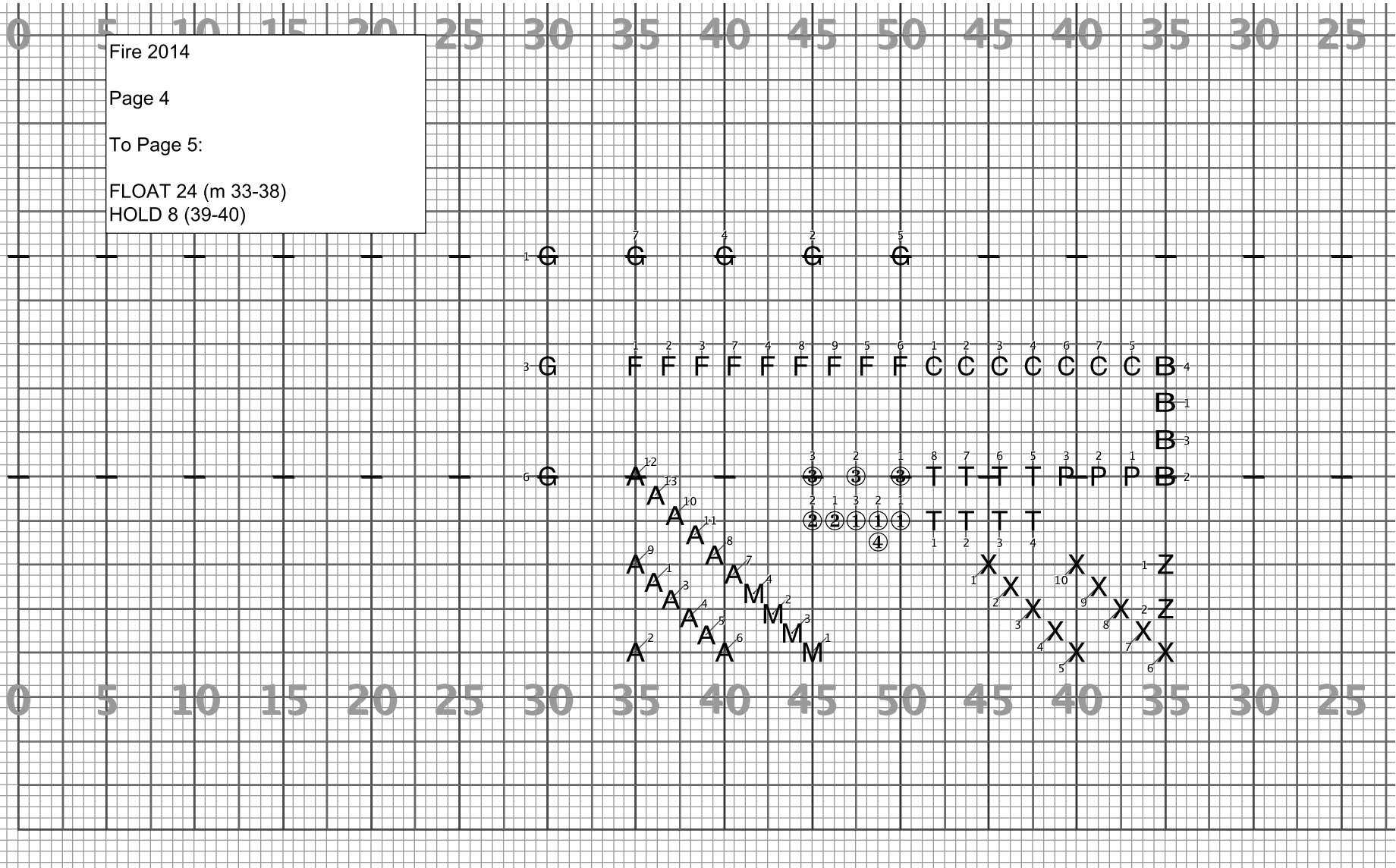


0 5 10 15 20 25 30 35 40 45 50 45 40 35 30 25

0

Director Viewpoint

Fire 2014
 Page 4
 To Page 5:
 FLOAT 24 (m 33-38)
 HOLD 8 (39-40)



Director Viewpoint

Fire 2014

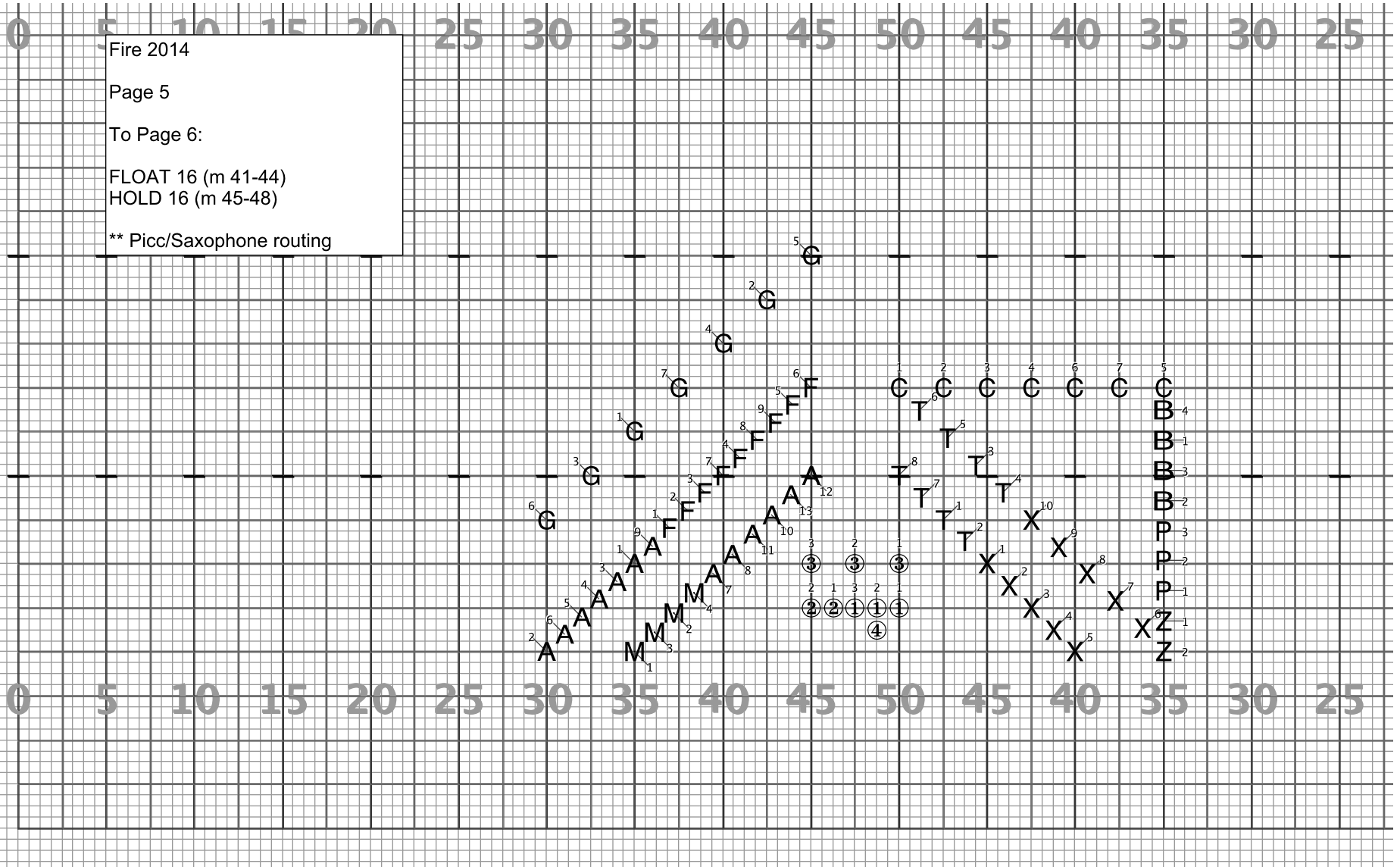
Page 5

To Page 6:

FLOAT 16 (m 41-44)

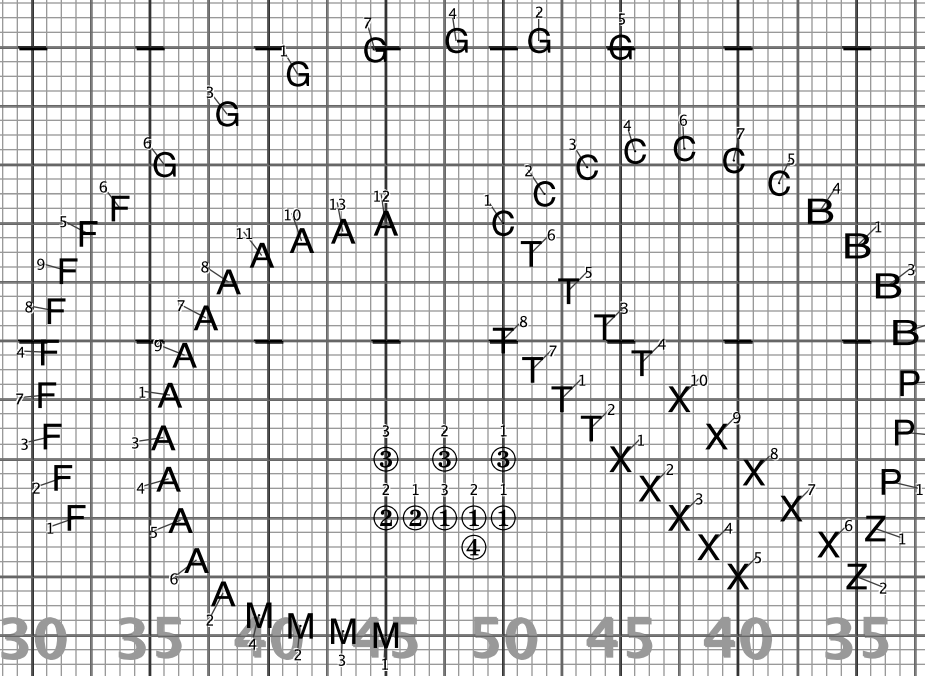
HOLD 16 (m 45-48)

** Picc/Saxophone routing



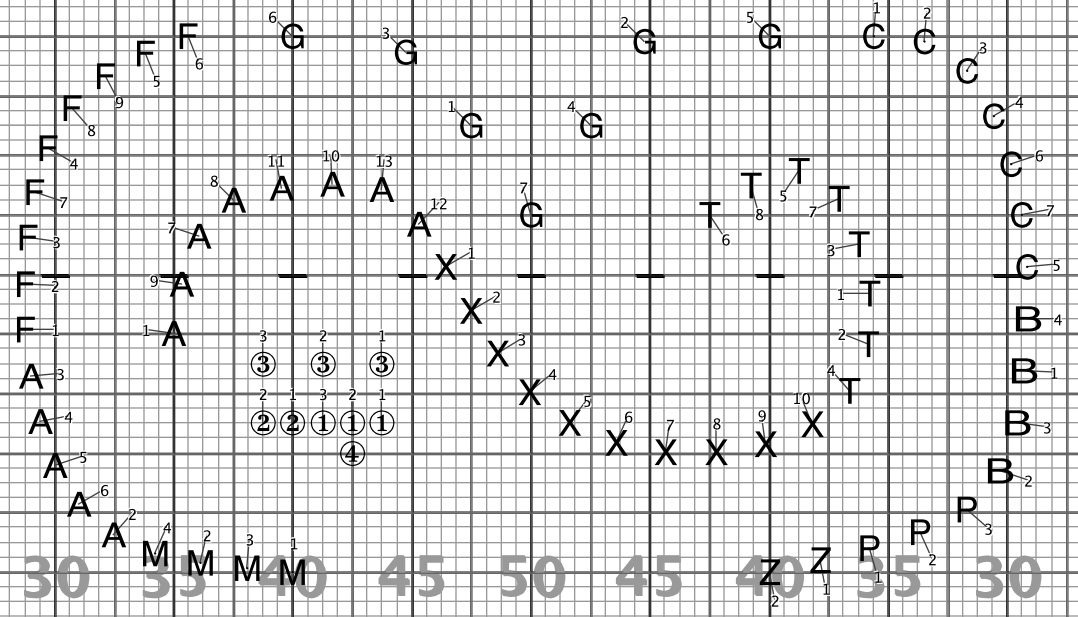
Director Viewpoint

Fire 2014
Page 6
To Page 7:
FLOAT 24 (m 49-54)
HOLD 8 (m 53-54)
PnB 32 (m 57-66)



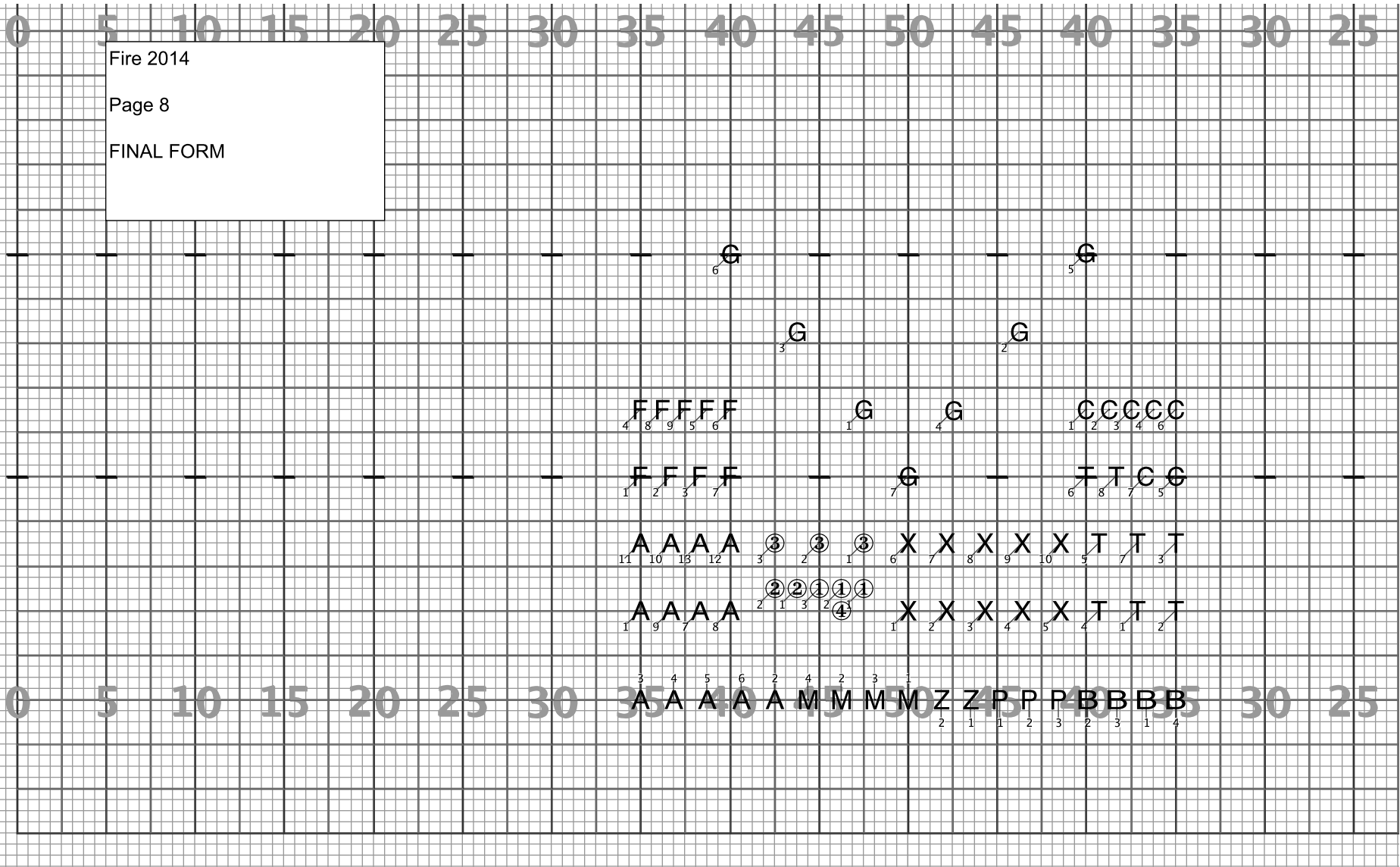
Director Viewpoint

Fire 2014
Page 7
To Page 8:
FLOAT 16 (m 65-68)
HOLD 8+1 (m 69-71)



Director Viewpoint

Fire 2014
Page 8
FINAL FORM



Director Viewpoint